



90kw Used Wheel Loader Road Roller Compactor Liugong CL G624

Our Product Introduction

Basic Information

- Place of Origin: China
- Brand Name: Liugong
- Model Number: CL G624
- Minimum Order Quantity: 1 Set
- Price: Negotiable
- Packaging Details: Container, Bulk
- Delivery Time: 3-7 Work Days
- Payment Terms: L/C, D/A, D/P, T/T, Western Union, MoneyGram
- Supply Ability: About 100 units are supplied every month



Product Specification

- Product Number: Static Pressure Roller
- Rear Wheel Distribution Mass: 15.2 Tons
- Overall Size: 6.145×2.320×3.11m
- Wheelbase: 3100mm
- Engine Model: D4114ZG1B
- Maximum Output Power: 90kw
- High Speed: 10.5km/h
- Minimum Outer Radius Of Turning: 6.5m
- Highlight: 90kw Used Wheel Loader,
CL G624 Used Wheel Loader,
Liugong road roller compactor

Product Description

Used Wheel Loader 6.145m 2.320m CL G624 Maximum Output Power 90kw

Product Description:

LiuGong CLG624's integral flip-up fiberglass engine hood features sound insulation and noise reduction, easy maintenance, streamlined design, and excellent rear visibility. According to different construction requirements, the front and rear wheel line pressure can be adjusted by adding or subtracting counterweights to achieve good compaction effect.

Product Details:

The product model: static pressure roller

The mass distributed to rear wheels: 15.2 tons

The overall machine size: 6.145×2.320×3.11 meters

The wheelbase: 3100mm

The engine model: D4114ZG1B

The maximum output power: 90kW

The high-speed driving speed: 10.5km/h

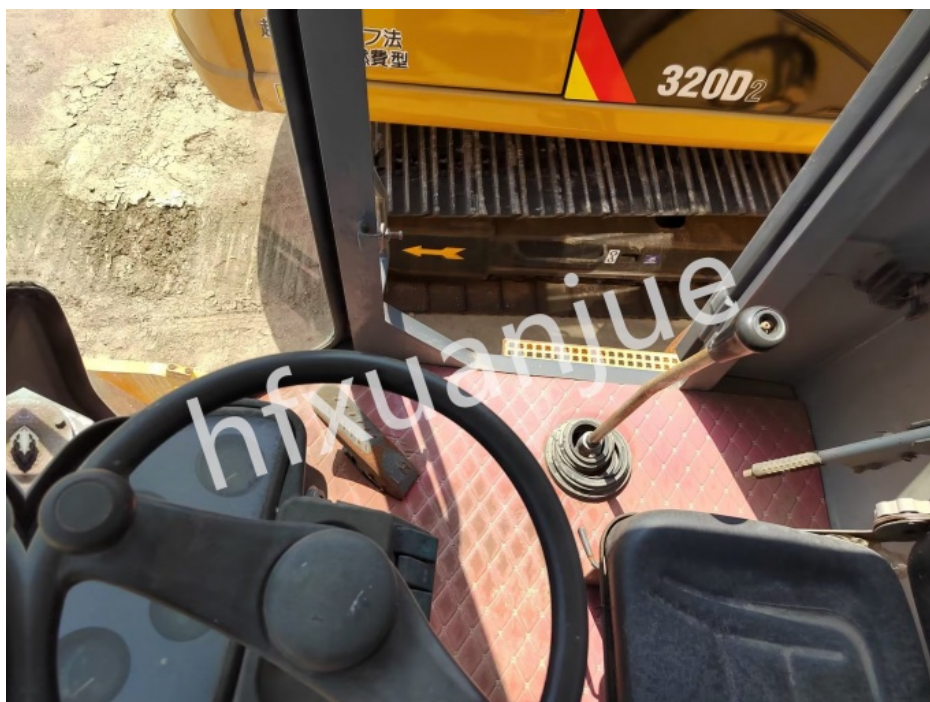
The minimum turning outer radius: 6.5m

Advantages:

- 1, Good compaction effect: SR26MA adopts high-frequency vibration technology, which can effectively compact the road surface and improve the density and strength of the road surface.
- 2, Easy operation: SR26MA adopts a hydraulic control system, which is easy to operate and the driver can easily control the operation of the machine.
- 3, Strong adaptability: SR26MA can adapt to different road conditions, including hard roads, soft roads and mountainous roads.
- 4, High reliability: SR26MA adopts high-quality components and advanced manufacturing technology, which has high reliability and can work continuously for a long time.
- 5, Easy maintenance: SR26MA is easy to maintain, requiring short maintenance time and low maintenance costs.

Gallery:







Packing&Shipping:



F & Q

Xuanjue Serve For You, Best Quality And Lowest Price

Q1. What payment method?

Payment is negotiable

Q2. Will our company provide any service to the machine?

Yes! Before we deliver the machine, we will test, check, service, maintenance and clean it the machine.

Q3. What's the MOQ ?

MOQ is 1set. FOB or others can be negotiated.

Q4. What's the payment terms?

FOB or others can be negotiated.

Q5. Who pays the freight?

This is determined based on the payment method. We can either find a freight forwarder or the customer can designate a freight forwarder.



Hefei Xuanjue Construction Machinery Co., Ltd.



13385604601



used-excavatormachine.com

Sanshitou,Xinzhan District,Feidong County,Hefei City,Anhui Province,China